

Investor Information (As of March 31, 2007)

Company Information

SANYO Electric Co., Ltd.

Foundation and Incorporation Founded: February 1947
Incorporated: April 1950

Capital ¥322,242,319,083

Subsidiaries 205 (Domestic 79 Overseas 126)

Affiliated Companies 70 (Domestic 40 Overseas 30)

Number of Employees 11,032 (Consolidated 94,906)

Head Office

5-5, Keihan-Hondori 2-chome, Moriguchi City, Osaka 570-8677, Japan
Telephone: +81-6-6991-1181 Facsimile: +81-6-6992-0009

U.S. Contact Address

SANYO NORTH AMERICA CORPORATION (Head Office)
2055 Sanyo Avenue, San Diego, CA92154, U.S.A.

Telephone: +1-619-661-1134 Facsimile: +1-619-661-6795

URL Company information (Japanese) <http://www.sanyo.co.jp/>
(English) <http://www.sanyo.com/>
IR information (Japanese) <http://www.sanyo.co.jp/ir/>
(English) <http://www.sanyo.co.jp/ir/e/>

Stock Information

Stock Data

Type	Total number of shares issuable	Total capital shares issued	Number of stockholders
Common stock	7,060,300,000	1,872,338,099	282,589
Class A preferred stock	182,600,000	182,542,200	3
Class B preferred stock	246,100,000	246,029,300	3

Stock Listings Tokyo, Osaka

Securities Code 6764

Number of Unit Stocks 1,000 stocks

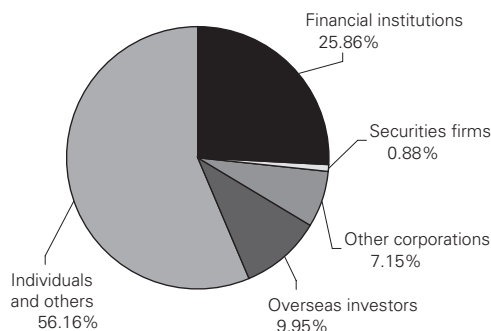
Stock Transfer Agent

The Sumitomo Trust & Banking Co., Ltd.
5-33, Kitahama 4-chome, Chuo-ku, Osaka 540-8639, Japan

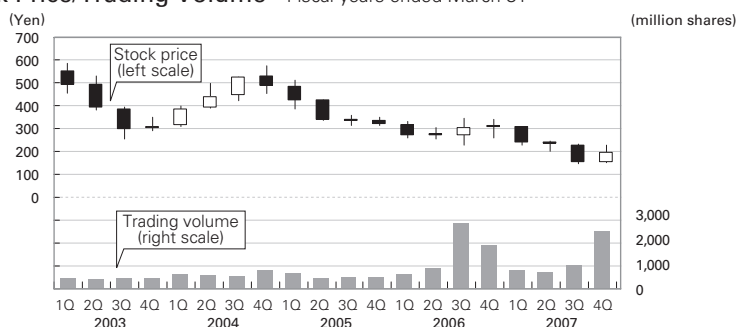
Major Stockholders

		Number of shares
(1) Common stock	The Master Trust Bank of Japan, Ltd. (trust account)	88,350,000
	SANYO Electric Employees Share Ownership	49,483,439
	Sumitomo Mitsui Banking Corporation	43,278,781
	Nippon Life Insurance Company	39,441,145
	Sumitomo Life Insurance Company	30,000,000
	Resona Bank, Ltd.	29,748,402
	Mitsui Sumitomo Insurance Co., Ltd.	23,435,900
	Shioya Tochi Co., Ltd.	22,467,977
	Japan Trustee Services Bank, Ltd. (trust account)	21,293,000
Japan Trustee Services Bank, Ltd. (trust account 4)	19,108,000	
(2) Class A preferred stock	Evolution Investments Co., Ltd.	89,804,900
	Oceans Holdings Co., Ltd.	89,804,900
	Sumitomo Mitsui Banking Corporation	2,932,400
(3) Class B preferred stock	Evolution Investments Co., Ltd.	88,766,600
	Oceans Holdings Co., Ltd.	88,766,600
	Sumitomo Mitsui Banking Corporation	68,496,100

Stock Ownership (Common stock)



Stock Price/Trading Volume Fiscal years ended March 31



	2003	2004	2005	2006	2007
High	¥ 633	614	545	363	324
Low	¥ 264	326	330	237	148

*Stock prices and trading volumes are quoted from Tokyo Stock Exchange.